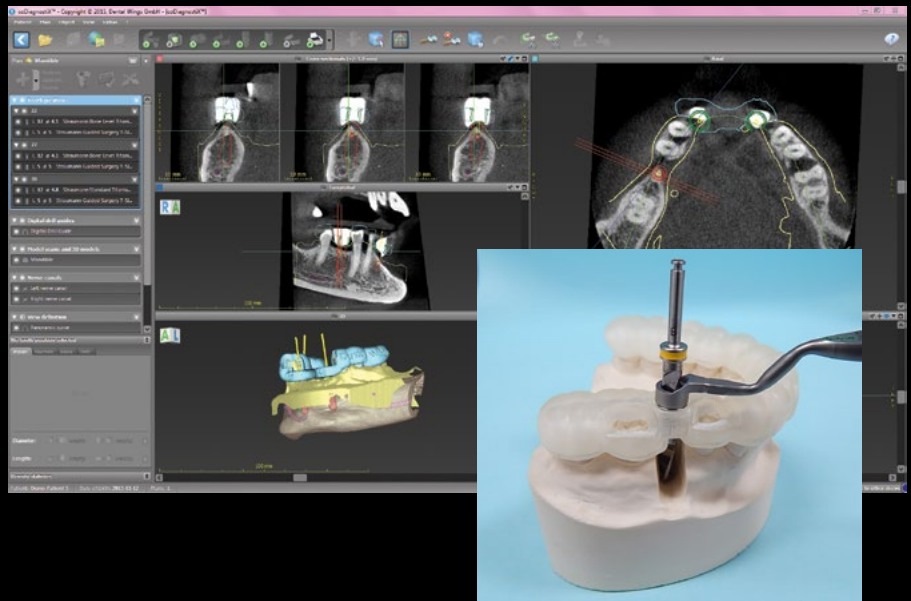


Implants just got EZer!

Looking for a solution that provides predictable and precise placement of your implants? The EZ Guide uses the latest technology to make designing and placing implants an easy and consistent experience.



Getting Started is EZ!

What we need from you to make an EZ Guide:

- CBCT or cone beam scan of full upper and lower arch (see CBCT general guidelines insert).
- Zipped DICOM files uploaded to Arrowhead's portal.
- Models of upper and lower arches (impressions, stone models, or STL model files).
- The name of implant system being used for the case and desired size of implant specified on RX.
- A signed copy of the EZGuide Hold Harmless Agreement (if this is your first case).
- A approval of the surgical guide design via our easy to use e-signature app.

What you need in your office:

- The implant system's guided surgery kit with twist drills that have a stopper and a drill key set from the implant company.

What you will get from Arrowhead:

- A EZGuide surgical guide.
- Details sheet showing the placement of the implant(s) in the bone.
- Guide sleeves placed in the EZGuide and ready for immediate use.

Make your job of placing implants EZ! Find out more and get started by calling 1-800-800-7200.

CBCT General Guidelines

- **Always scan the patient with an open bite (biting on a cotton roll).**
- Remove any removable prostheses at time of scan.
- Make sure the patient's tongue is not touching the plate.
- Separate patient's lips from gingiva (using a cotton roll).
- Always adjust the exposure control on the CBCT to the specific patient (i.e. Large Adult, Small Adult, etc...).
- Resolution (slice thickness) should ideally be between 0.25 - 0.4 mm. For implant planning we do not need much smaller slices as they tend to worsen scatter.
- Adjust patient position to that the CBCT slice is parallel to the arch of interest. If scanning for both upper and lower implant placement, then bisect the angle between the arches.
- If the patient has metal restorations within the arch of interest then use your CBCT's settings for scatter reduction (consult your CBCT manual for instructions).

For edentulous cases:

DUAL SCAN PROTOCOL (used if existing denture fits well and end prosthetic is going to be in the same position)

- Place 5-7 radiographic markers on both buccal and lingual aspects of the denture.
- Scan patient with denture in place with the radiographic markers in place.
- Then scan just the denture with the radiographic markers (place the denture on a foam block in the CBCT scanner).

SINGLE SCAN PROTOCOL (used if you are going from a denture to a fixed prosthetic)

- Have a barium scan template made.
- Scan the patient with the scan template in place (following the general guidelines).
- Scan the patient without the scan template in place (following the general guidelines).

Send Us Your Case

The preferred method is to have you send digital files via our secure lab portal.

SUBMITTING A CASE TO THE LAB

1. Locate the DICOM file(s) and create a ZIP file. Be sure to name the file with the patient's first initial and last name (i.e. JDoe.zip).
2. Go to our lab portal (<https://arrowheaddental.rxupload.com>) and sign in.
3. Create the new case and upload the zipped DICOM files to that case.
4. We will create a design proposal based upon your uploaded files and the information you include on the digital Rx.
5. We will send the design approval to your email address for you to sign digitally via Adobe Sign.
6. Once we have your approval we will fabricate your surgical guide and ship it to your office.

Pricing

Design Charge

- Surgical Guide Design Fee - \$43* (invoiced upon design approval)
*Design proposals must be approved within 90 days or a new scan must be submitted which will incur an additional design fee.

Product Charges

- EZGuide - \$197
- Sleeve - \$45 each

Options

- Fixation Drill - \$119
- Fixation Pin - \$56
- Fixation Sleeve - \$32