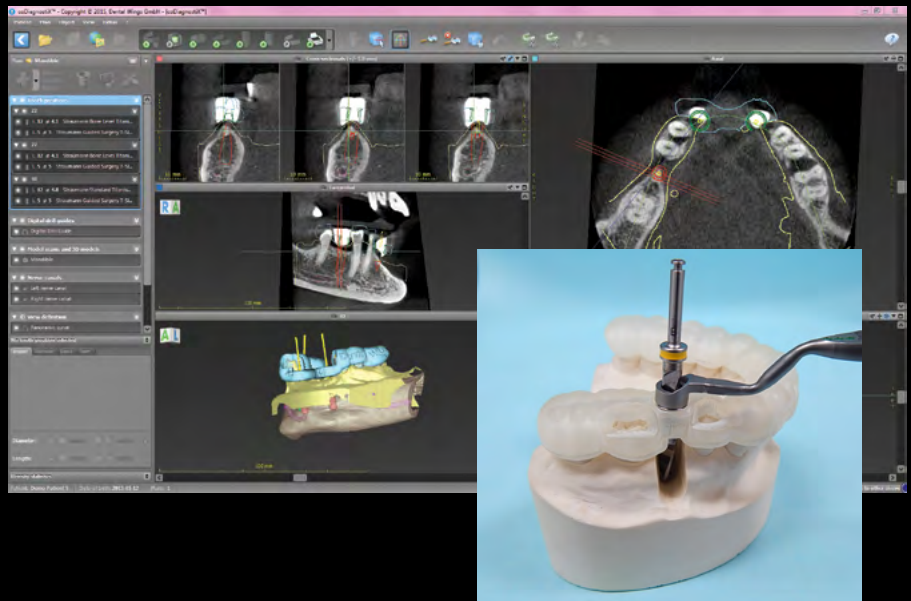


Implants just got EZer!

Looking for a solution that provides predictable and precise placement of your implants? The EZ Guide uses the latest technology to make designing and placing implants an easy and consistent experience.



Getting Started is EZ!

What we need from you to make an EZ Guide:

- CBCT or cone beam scan of full upper and lower arch (see CBCT general guidelines insert)
- DICOM files on disk, uploaded to our FTP server, or sent via Dropbox (see DICOM upload instruction insert)
- Models of upper and lower arches (impressions, stone models, or STL model files)
- The name of implant system being used for the case and desired size of implant specified on RX.
- A signed copy of the EZGuide Hold Harmless Agreement (if this is your first case)

What you need in your office:

- The implant system's guided surgery kit with twist drills that have a stopper and a drill key set from the implant company (drill sleeves can be provided upon request)

What you will get from Arrowhead:

- An EZGuide surgical stent.
- Details sheet showing the placement of the implant(s) in the bone
- Guide sleeves placed in the EZGuide and ready for immediate use
- Drill sleeves

Make your job of placing implants EZ! Find out more and get started by calling 1-800-800-7200.

CBCT General Guidelines

- **Always scan the patient with an open bite (biting on a cotton roll).**
- Remove any removable prostheses at time of scan.
- Make sure the patient's tongue is not touching the plate.
- Separate patient's lips from gingiva (using a cotton roll).
- Always adjust the exposure control on the CBCT to the specific patient (i.e. Large Adult, Small Adult, etc...).
- Resolution (slice thickness) should ideally be between 0.25 - 0.4 mm. For implant planning we do not need much smaller slices as they tend to worsen scatter.
- Adjust patient position to that the CBCT slice is parallel to the arch of interest. If scanning for both upper and lower implant placement, then bisect the angle between the arches.
- If the patient has metal restorations within the arch of interest then use your CBCT's settings for scatter reduction (consult your CBCT manual for instructions).

For edentulous cases:

DUAL SCAN PROTOCOL (used if existing denture fits well and end prosthetic is going to be in the same position)

- Place 5-7 radiographic markers on both buccal and lingual aspects of the denture.
- Scan patient with denture in place with the radiographic markers in place.
- Then scan just the denture with the radiographic markers (place the denture on a foam block in the CBCT scanner).

SINGLE SCAN PROTOCOL (used if you are going from a denture to a fixed prosthetic)

- Have a barium scan template made.
- Scan the patient with the scan template in place (following the general guidelines).
- Scan the patient without the scan template in place (following the general guidelines).

Sending Us Files

The preferred method is to have you send digital files via our FTP server. You can also send us digital files via a Dropbox account or even send us files on a disk or USB drive.

SENDING FILES VIA FTP

1. Locate the DICOM file(s) and copy create a ZIP file that has the doctor name and the last name of the patient.
2. Go to our FTP site <https://arrowhead.brickftp.com>.
3. Sign into the site using the following credentials:
Username: doctor
Password: implant
4. If there is a folder there with your name click on that folder. If not click the Create Folder button and create a folder with the doctor's name.
5. Once created go into that folder and click the Upload Files button. You will then browse to the ZIP file containing the DICOM files you created earlier and upload them.

Pricing

Common Charges

- \$41 diagnostic wax-up per tooth
- \$10 dupe model (two per case)

Simple Suck Down Surgical Stent

Used to help place implants where there is predictable bone.

- \$41 per stent

Suck Down Surgical Stent with Tube

Similar to the simple suck down stent but with a metal sleeve to aid in placing the pilot drill through the central fossae.

- \$63 per stent

Barium Stent

Used in the mouth for the x-ray giving a reference point to determine the path of insertion for the implant.

- \$83 per stent

EZGuide

- \$150 per arch
- \$40 per Straumann guide sleeve
- \$15 per sleeve on all other systems
- \$45 per drill sleeve (2-5 per case)